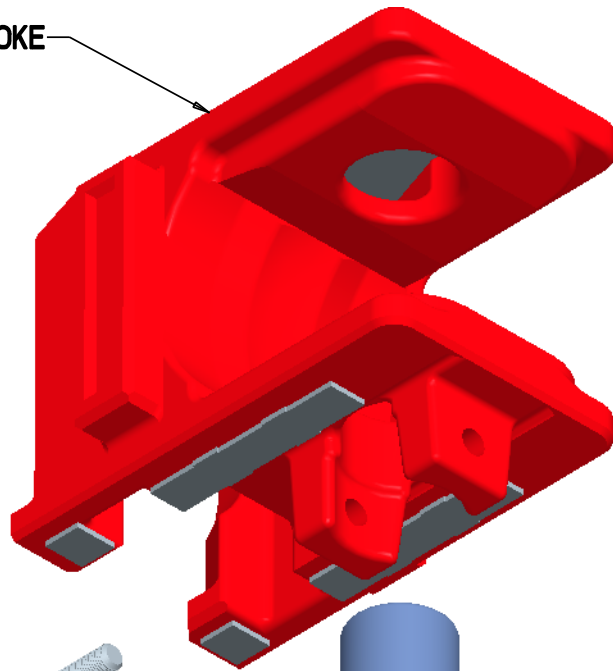
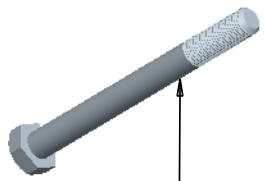


F YOKE

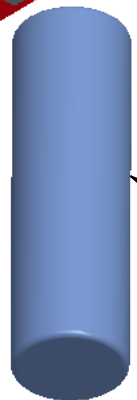


COUPLER KEY RETAINING COMPONENTS			
ITEM	FMI	ASF-KEystone	AHI
1	87.21937	570L241204	RA-03-0007
2	87.21936	070L165700	KS-03-3452 OR RE-02-5703
3	87.21988	15376	RA-03-0008
4	NOT USED	19566	RA-03-0009
5	Y47	1809	AH-8089

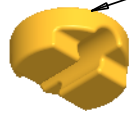
① BOLT PIN RETAINER



⑤ COUPLER PIN



② DRAFT PIN RETAINER



③ LOCKNUT PIN RETAINER



④ WASHER HARDEN



INSTALL COUPLER, DRAFT PIN, DRAFT PIN RETAINER, TIGHTEN THE BOLT PIN TETAINER AND LOCKNUT PIN RETAINER SNUG. SECURE THE LOCKNUT TO BOLT BY TACK WELDING LOCKNUT TO THE BOLT PIN RETAINER. IF NO WELDING CAPABILITY IS AVAILABLE, THE LOCKNUT MAY BE SECURED BY CHISEL CHECKING THE BOLT THREADS PROTRUDING FROM THE LOCKNUT.

COUPLER RETENTION INSTALLATION PROCEDURE FOR FREIGHTMASTER TYPE "F"-KN SERIES STYLE APPLICATION

SKC3738